



**HASCON  
ENGINEERING®**  
AIR FILTRATION SYSTEMS & VENTILATION



| TYPE  | FLOW<br>m³/s  | IN 150°<br>mm Ø | Total Power<br>kW | Accessories | WATER<br>m³/h | #   | W. Tank<br>mm |
|-------|---------------|-----------------|-------------------|-------------|---------------|-----|---------------|
| Model | 0.000 - 0.000 | 200 - 400       | 4                 | 200/100/200 | 200           | 200 | 6             |
| Model | 0.000 - 0.000 | 200 - 400       | 5.5               | 100/100/200 | 200           | 200 | 6             |
| Model | 0.000 - 0.000 | 200 - 400       | 7.5               | 100/100/200 | 200           | 200 | 6             |
| Model | 0.000 - 0.000 | 200 - 400       | 11                | 100/100/200 | 200           | 200 | 6             |

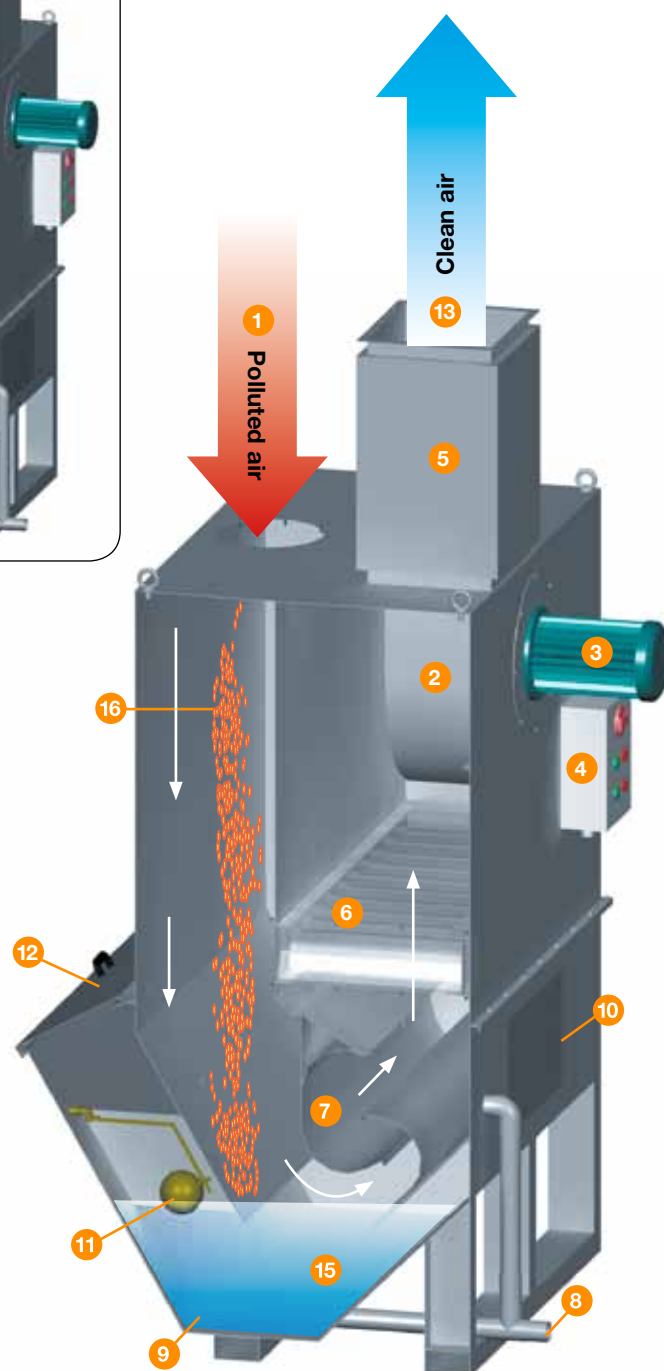
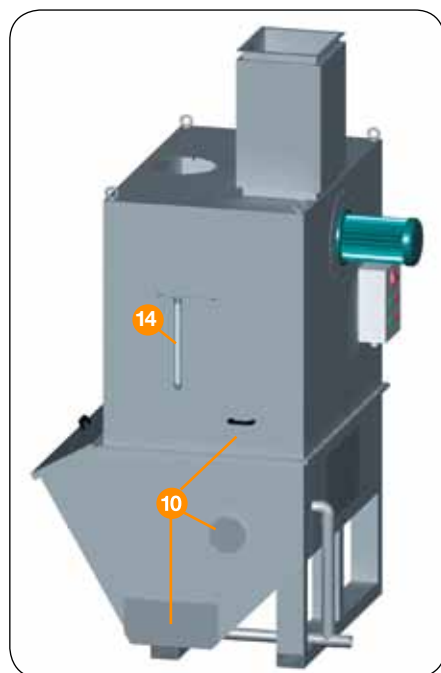
**Idrodust Compact®**

Hydrodynamic wet filters

*A cleaner world.*

## The Idrodust Compact®

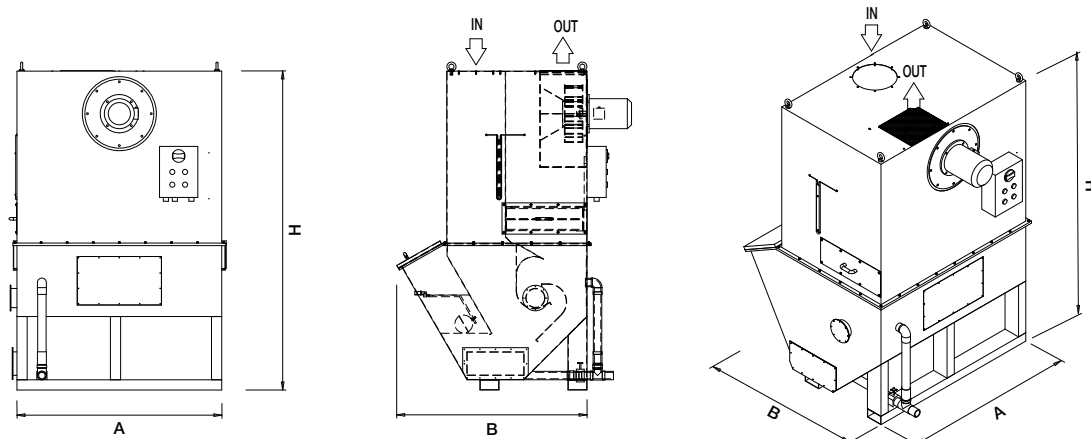
- 1 Polluted air inlet
- 2 Fan
- 3 Motor
- 4 Electric board for starting (optional)
- 5 Silencer (optional)
- 6 Drop separator
- 7 Duct
- 8 Excess water tank discharge
- 9 Tank
- 10 Inspection and maintenance doors
- 11 Mechanic valve for H<sub>2</sub>O level adjustment
- 12 Door for removal of filtered material (sludge)
- 13 Clean air outlet
- 14 Differential manometer
- 15 Water
- 16 Sparks



### Operation

The Idrodust Compact® is a hydrodynamic filter for dust, vapours and gases which exploits the effect of micro mixing of gas to be treated with water. Mixing is realized in a duct with a specially designed shape, where water is dragged for the depression created by the fan and polluted air is centrifuged to enable dust trapping and/or absorption of gases. A high performance drop separator on the outlet avoids dragging of water. Water circulates without the aid of pumps or spraying nozzles, ensuring the reliability of the machine, whose parts are not subject to wear or clogging, reducing maintenance requirements.

## Idrodust Compact® range



| CODE    | Airflow<br>m³/h | H tot.<br>mm H <sub>2</sub> O | Power<br>kW | A<br>mm | B<br>mm | H<br>mm | Inlet<br>Flange<br>Ø mm | Ø Flange<br>hole<br>Ø mm | No. of<br>holes<br>M8 |
|---------|-----------------|-------------------------------|-------------|---------|---------|---------|-------------------------|--------------------------|-----------------------|
| ID103/V | 2500 ÷ 3500     | 200 ÷ 180                     | 4           | 800     | 1550    | 2520    | 250                     | 280                      | 6                     |
| ID105/V | 4000 ÷ 6000     | 230 ÷ 190                     | 5,5         | 1200    | 1550    | 2520    | 300                     | 330                      | 6                     |
| ID108/V | 7000 ÷ 8500     | 240 ÷ 200                     | 7,5         | 1600    | 1550    | 2520    | 350                     | 380                      | 8                     |
| ID110/V | 9000 ÷ 12000    | 300 ÷ 250                     | 11          | 2000    | 1550    | 2520    | 400                     | 430                      | 8                     |

## Applications

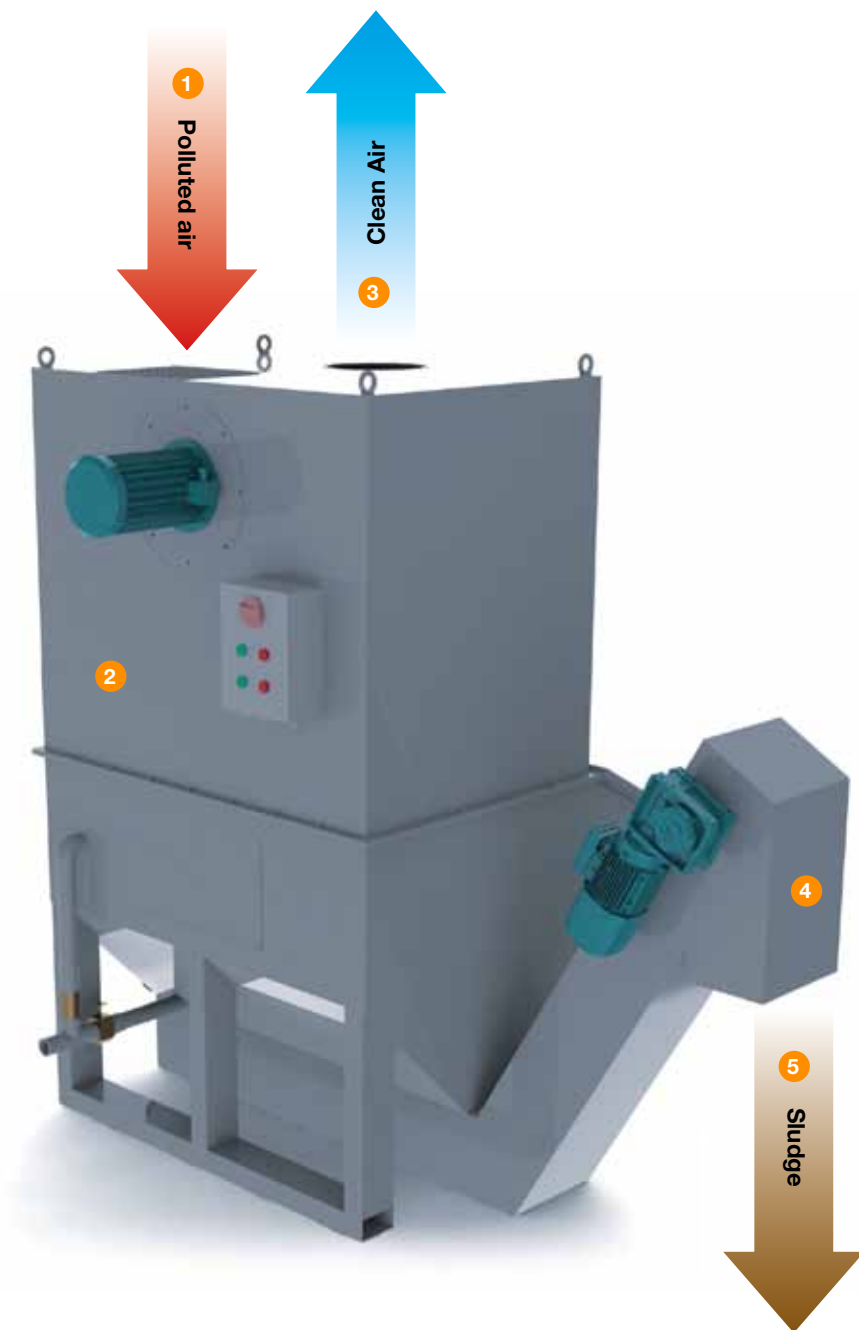
Idrodust Compact® hydrodynamic wet filters can be used for processing involving sparks or wet dusts.



- Metal Satin Finish
- Sandblasting
- Machining
- Gaseous Fluids

## Sludge Dredge Idrodust Compact®

- 1 Polluted air inlet
- 2 Idrodust Compact
- 3 Air outlet
- 4 Sludge removal
- 5 Sludge discharge



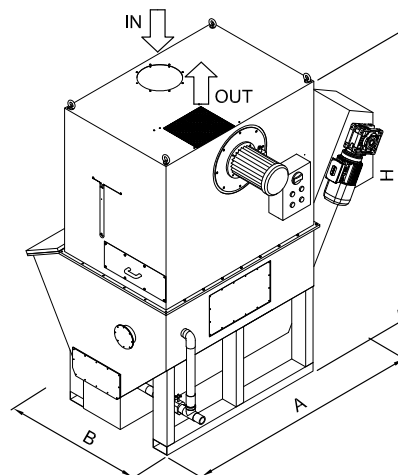
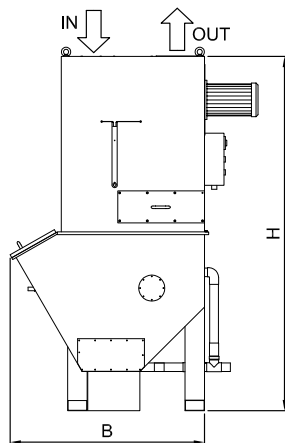
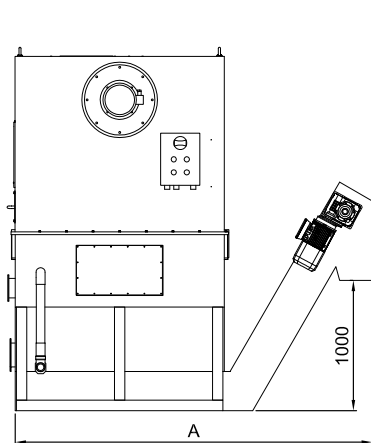
### Operation

The Idrodust equipped with Sludge Dredge is a hydrodynamic filter for dust, vapours and gases which exploits the effect of micro mixing of gas to be treated with water.

The operation, similar to the Idrodust Compact® one, only differs in the way sludge is discharged from the sedimentation tank.

The dust/sludge that settles to the bottom of the tank is collected by scrapers and mechanically conveyed to the outlet for disposal. The sludge dredge avoids downtime required for sludge removal, thus greatly reducing general management costs.

## The Sludge Dredge Idrodust Compact® range



| CODE      | Airflow<br>m³/h | H tot.<br>mm H <sub>2</sub> O | Power<br>kW | A<br>mm | B<br>mm | H<br>mm | Inlet<br>Flange<br>Ø mm | Ø Flange<br>hole<br>Ø mm | No. of<br>holes<br>M8 |
|-----------|-----------------|-------------------------------|-------------|---------|---------|---------|-------------------------|--------------------------|-----------------------|
| ID103/V-D | 2500 ÷ 3500     | 200 ÷ 180                     | 4           | 2000    | 1550    | 2750    | 250                     | 280                      | 6                     |
| ID105/V-D | 4000 ÷ 6000     | 230 ÷ 190                     | 5,5         | 2400    | 1550    | 2750    | 300                     | 330                      | 6                     |
| ID108/V-D | 7000 ÷ 8500     | 240 ÷ 200                     | 7,5         | 2800    | 1550    | 2750    | 350                     | 380                      | 8                     |
| ID110/V-D | 9000 ÷ 12000    | 300 ÷ 250                     | 11          | 3200    | 1550    | 2750    | 400                     | 430                      | 8                     |

## Benefits



- Simple maintenance
- Multiple inspection accesses to the filter
- Absence of recycling pumps and nozzles
- No risk of fire due to the presence of water
- Very low installation, operation and maintenance costs





HASCON ENGINEERING S.p.A.  
Via S.Bernardino, 131  
20025 LEGNANO (MI) - ITALY  
Tel. +39 0331 52.74.11  
Fax: +39 0331 52.74.84  
[www.hascon.it](http://www.hascon.it)

ISO 9001-14001 certified company