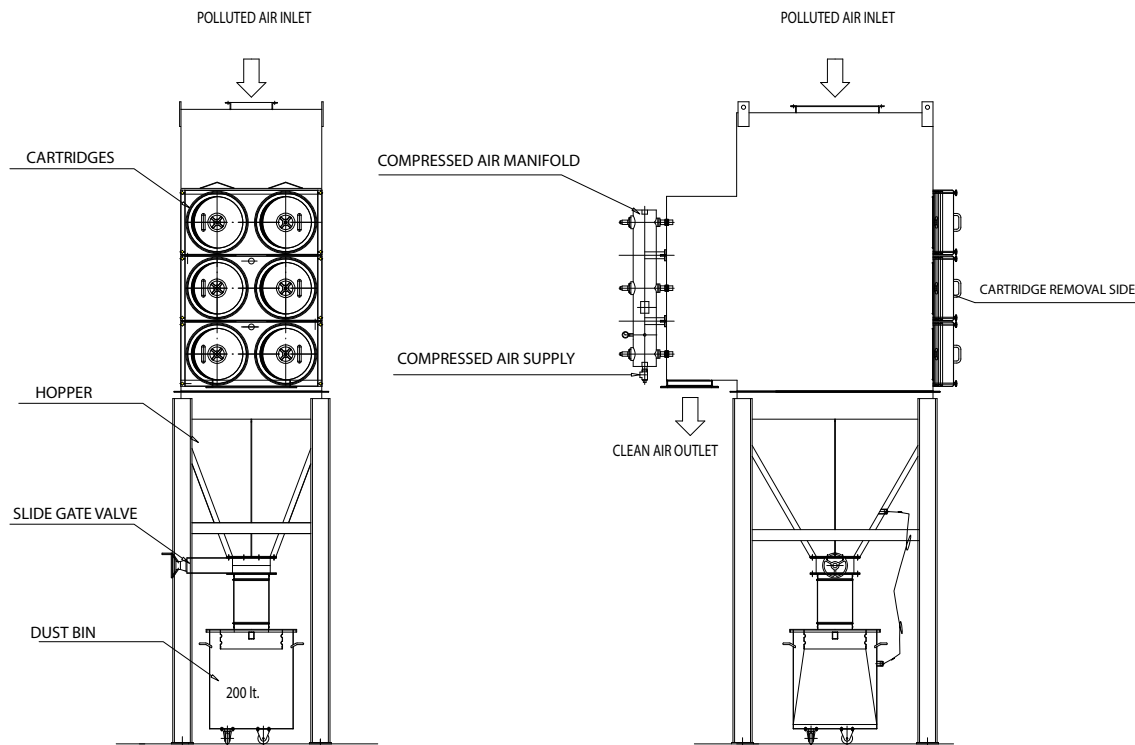




Pulsatron H

Self-cleaning modular cartridge dust collector "Pulse-Jet" type

Pulsatron H



The cartridge filter “PULSATRON H” is a self-cleaning, modular “Pulse-Jet” dust collector type with pneumatic cleaning of the cartridges by means of reverse flow jet of compressed air. The pleated filtering elements are highly efficient and remove 99.95% of the 0.5 micron particles, ensuring emissions lower than 1 mg/Nm³.

The specific configuration with horizontal cartridges enables a descending air flow which makes the unit especially suitable to treat very light, fine dusts.

The unit is compact and is able to depurate in safety condition relevant air volume involving limited space and costs, in terms both of first installation and operation.

The protection baffles, located in the inlet plenum above the cartridges rows, optimize air distribution and protect the filtering elements from direct impact of dust, maximizing cartridge durability and minimizing abrasion, pressure drops, energy and compressed air consumption. Filter maintenance is carried out from the front area. No special tool is required, and this makes cartridge replacement very easy and quick.

The standard version is suitable for pressure/vacuum up to 60 mbar, while the reinforced version is designed for pressure/vacuum up to 0.2 bar. Special versions for pressure up to 0.45 bar are available.

The range includes single or double cartridge versions, with rows including from 1 to 4 filtering elements positioned vertically.

All the electric parts are IP65 compliant.

Operation mode

Dusty air enters the top area of the unit with flow direction downward.

The air down flow eases the fall of the particles into the hopper below: both the heavier ones, which fall due to inertia, and the lighter ones, detached from the cartridge during washing.

Dusty air is forced to pass through the cartridges from the outside to the inside, depositing the particulate on the external surface of the filtering elements.

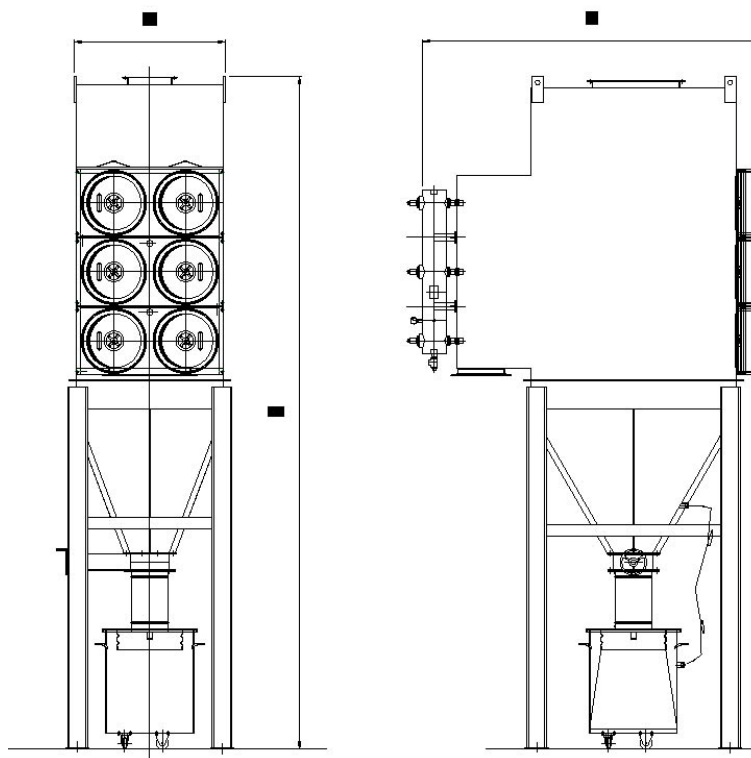
Cleaned air passes through the tube plate, entering the rear plenum and finally goes out from the cleaned air outlet in the lower area of the plenum.

During operation, the filtering cartridges are automatically cleaned by means of a reverse flow jet of compressed air inside the cartridges: the wave generated causes the detachment of the dust deposited on the external face and its fall into the hopper.

The dust is then collected in the specific quick opening trailer mounted drums located under the hopper.

Cartridge cleaning is controlled by a sequencing control panel which starts the cleaning cycle as soon as the pressure drop through the filters reaches a preset value and stops it when pressure drop decreases under a second threshold: all cleaning parameters (Δp of cycle start/stop, Δp of clogged filter alarm, pulse duration and pause time between the compressed air jet) are adjustable in function of the operating conditions.

Pulsatron H range

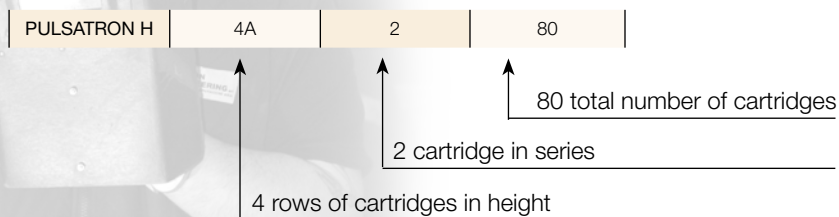


CODE	Filtering surface	Polyester cartridges	Rated capacity	Hoppers / modules	A	B	H
	m ²	nr.	m ³ /h	nr.	mm	mm	mm
PH1A-1-2	25	2	300-1200	1	1100	1500	2850
PH2A-1-4	50	4	600-2400	1	1100	1500	3450
PH3A-1-6	76	6	900-3600	1	1100	1500	4950
PH2A-2-8	100	8	1200-4800	1	1100	2300	3750
PH2A-2-16	200	16	2400-9600	2	2120	2300	3750
PH2A-2-24	300	24	3600-14500	3	3140	2300	3750
PH2A-2-32	400	32	4800-19300	4	4160	2300	3750
PH2A-2-40	500	40	6000-24200	5	5180	2300	3750
PH3A-2-12	150	12	1800-7200	1	1100	2300	4250
PH3A-2-24	300	24	3600-14500	2	2120	2300	4250
PH3A-2-36	455	36	5500-21800	3	3140	2300	4250
PH3A-2-48	605	48	7300-29000	4	4160	2300	4250
PH3A-2-60	755	60	9100-36300	5	5180	2300	4250
PH3A-2-72	910	72	10900-43500	6	6200	2300	4250
PH4A-2-16	200	16	2400-9700	1	1100	2300	4750
PH4A-2-32	400	32	4800-19400	2	2120	2300	4750
PH4A-2-48	605	48	7300-29000	3	3140	2300	4750
PH4A-2-64	805	64	9700-38700	4	4160	2300	4750
PH4A-2-80	1010	80	12100-48400	5	5180	2300	4750
PH4A-2-96	1210	96	14500-58000	6	6200	2300	4750
PH4A-2-112	1410	112	16900-67700	7	7220	2300	4750
PH4A-2-128	1610	128	19400-77400	8	8240	2300	4750
PH4A-2-144	1815	144	21800-87100	9	9260	2300	4750

* The flowrate depend on the process and the type of filtering.
Our technical staff is at your disposal for any question

- Unit customization in function of the space availability and plant layout
- Maintenance platform for the cartridges with access ladder
- Single hopper
- Miscellaneous accessories such as level switch, heating tracing tapes, shakers, bridge breaking system, leak detector, isolation gates, etc.
- Several types of dust discharge systems such as slide gate valves, rotary valves, screw conveyors, double gates valve, drums of different capacities
- Different types of filtering materials
- Customized versions with special materials and protective cycles
- Execution for explosive dusts with reinforced casing, antistatic and flame retardant materials, explosion relief vent by rupture panels dimensioned according to standards NFPA 68 or VDI 3673, gravity check gates or isolation gates with pyrotechnic charge, fire extinguishing and inerting systems, diverter, etc.
- Bag-In/Bag-Out system with barrier bags for cartridge maintenance and dust collection in safe area
- Packaged solutions with canister for absolute filter and aspiration unit
- Explosion proof versions and ATEX zone 1/21 and 2/22 certified units.

Explanation of the reference code of the different sizes:



- **High filtering efficiency and low emissions ($\leq 1 \text{ mg/Nm}^3$)**
- **Simple, quick maintenance of filtering cartridges**
- **Very low installation, use and maintenance costs**
- **Compact units which require limited installation space**
- **“Down flow” air direction which eases the fall of the particulate into the hopper**
- **Low operating pressure drop with limited consumption of compressed air and energy**
- **Long durability of filtering cartridges**
- **Easy, safe inspection of the whole filter**
- **Sturdy and fully airtight casing, ensuring safety and reliability**



HASCON ENGINEERING S.p.A.

Via S.Bernardino, 131

20025 LEGNANO (MI) - ITALY

Tel. +39 0331 52.74.11

Fax: +39 0331 52.74.74

www.hascon.it

ISO 9001 ISO 14001 certified company