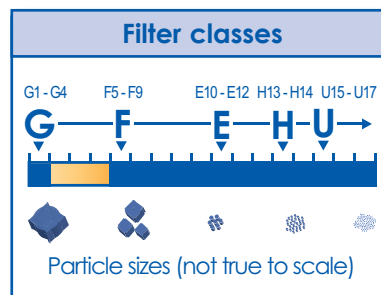




Glass fibre mats



Applications

Dust-Stop (yellow):

For separation of dry dust types

- In carpenters' workshops, metal working industry, etc.

Paint-Stop (green):

For use in separation of paint mist in paint shops and colour spraying cabins

- In automotive industry
- Manufacturing plants for furniture, windows, machines, etc.

Hydro-Stop (magenta):

For use in separation of ink mist used on dry particles of water based paint in paint shops and colour spraying cabins

- In automotive industry
- Manufacturing plants for furniture, kitchen industry, etc.

Versions

- Standard rolls e.g. 1 x 20 m und 2 x 20 m
- Precuts with changing frame available
- Special sizes on request
- Precuts for finished dimensions

Information concerning disposal:

The disposal is subject to local restrictions. Depending on separated substances, used filter-media has to be dried and disposed

Classification & Material characteristics

Dust-Stop (yellow)

1" \triangleq Filter class G2¹⁾

2" \triangleq Filter class G3¹⁾

4" \triangleq Filter class G4¹⁾

- Temperature resistant up to max. 80°C
- Additionally impregnated with antibacterial dust adhesive
- Contains no silicone

Paint-Stop (green)

2" \triangleq 94% Arrestance²⁾

3" \triangleq 96% Arrestance²⁾

4" \triangleq 98% Arrestance²⁾

- Temperature resistant up to max. 180°C
- Contains no silicone
- Free of lacquer harming substances

Hydro-Stop (magenta)

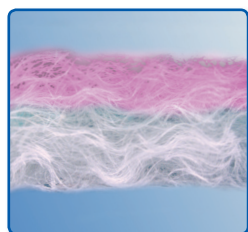
3" \triangleq 98% Arrestance²⁾

- The Hydro-Stop-additive (special dust adhesive) is free of wetting disturbing substances - qualified by automobile manufacturers
- Temperature resistant up to max. 120°C
- Contains no silicone

¹⁾According to EN 779

²⁾Paint mist Arrestance

Benefits of VOLZ Filters



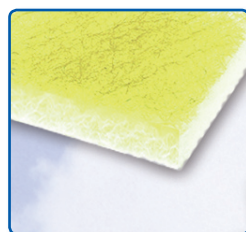
Shape elastic fibre structure (glass fibre mats)

- The low compressibility of inordinately bedded glass fibres prevents the used media from becoming compressed and enhances a higher separation



Paint mist separation mats (green or magenta)

- Separates paint mist from exhausted air. Thereby, exhaust air channels, fans and motors are protected from paint deposits. For identification reasons, the dust air side is coloured



Dry dust separation mats Dust-Stop (yellow)

- Media is additionally impregnated with an antibacterial dust adhesive and is used for separation of dry dust types. For identification reasons, dust air side is coloured yellow



- Glass fibre mats are produced in-house
- Quality control of the complete production with internal filter test equipment and modern quality-management-tools

Characteristics - VOLZ Hydro-Stop

The **VOLZ Hydro-Stop** combines the characteristics of Paint-Stop and Dust-Stop and was specially developed for the filtration of water based paint. Its progressive density, its fine fibre structure as well as its special dust adhesive guarantees a very low initial pressure drop, high paint holding capacity and long lifetime.

Your advantages are:

- **Cost savings** with a long lifetime
- **Reduction of energy costs** due to the low initial pressure drop
- **Efficient prevention of damage** of the fans, motors and air exhaust ducts as an effective prefilter to fulfil local legal requirements and the environment

Optional also with changing frame*



You can order a customized changing frame especially compatible in size and dimensions to your plant. This allows a much faster change of your filters and is also saving costs.

*Available for all VOLZ glass fibre mats

Standard versions glass fibre mats

Product	Filter class	Arrestance	Material thickness approx.	Roll length ¹⁾	Roll width ¹⁾
		mm	m	m	
Dust-Stop (yellow) 1"	G2	-	25	20	2.0 / 1.0 / 0.7 / 0.5
Dust-Stop (yellow) 2"	G3	-	50	20	2.0 / 1.0 / 0.7 / 0.5
Dust-Stop (yellow) 4"	G4	-	100	20	2.0 / 1.0 / 0.7 / 0.5
Paint-Stop (green) 2"	-	94%	50	20 / 25 / 80 / 91	2.0 / 1.0 / 0.7 / 0.5
Paint-Stop (green) 3"	-	96%	70	20 / 25 / 80 / 91	2.0 / 1.0 / 0.7 / 0.5
Paint-Stop (green) 4"	-	98%	100	20 / 25	2.0 / 1.0 / 0.7 / 0.5
Hydro-Stop (magenta) 3"	-	98% ²⁾	70	20	2.0 / 1.0

¹⁾ Further dimensions on request ²⁾ Based on an inhouse VOLZ-test with water based particles (16-18µm)

Technical Data

Product	Material thickness approx.	Flächengewicht	Initial pressure drop	Recommended final pressure drop	Nominal air flow rate	Lacquer separation arrestance ¹⁾	Temperature resistance
	mm	g/m ²	Pa	Pa	m ³ / h / m ²	%	°C
Paint-Stop (green) 3"	70	300	4 - 10	80	2500 - 6300	96	80
Hydro-Stop (magenta) 3"	70	300	5 ²⁾	250	2700	98 ²⁾	120 ²⁾

The measured data relates to 1m² filter-surface

¹⁾ The lacquer separation arrestance depends on the kind of lacquer, ink mist or environmental conditions like temperature or pressure in paint cabin

²⁾ Based on an inhouse VOLZ-test with water based particles (16-18µm)

VOLZ Luftfilter GmbH & Co. KG

Robert-Bosch-Straße 25
D-72160 Horb am Neckar

Phone: +49 7451 5516-0
Fax: +49 7451 5516-120

info@volzfilters.com
www.volzfilters.com

All information, images and pictures are property of VOLZ Luftfilter GmbH & Co. KG and are provided to the best knowledge. However VOLZ Luftfilter GmbH & Co. KG does not guarantee the completeness or correctness and cannot be held responsible for damages caused by the recipient's usage or his confidence in the completeness or correctness of the information. The stated data contains average values with tolerances as a result of production irregularities; therefore it does not relieve the recipient of own examination and tests. For the correctness of the information in particular cases, an explicit and written affirmation through VOLZ Luftfilter GmbH & Co. KG is required. Furthermore, the data serves as a service description and cannot be interpreted as warranted properties or durabilities.